

INSTRUCTION MANUAL

Important Safety Instructions

- Use this product only for its intended use as described in this manual.
- Do not allow children to use this product.
- If any part of the Airtouch™ Rotating Brush appears to be damaged or malfunctioning, discontinue use immediately.

Keep hair away from face using a band or tie during use.

Contents

AIRTOUCH™ ROTATING BRUSH POWER HANDLE

ON/OFF SWITCH



FOUNDATION BRUSH HEAD

Use with foundation for even application.



BLUSH BRUSH HEAD

Use with blush for even application.

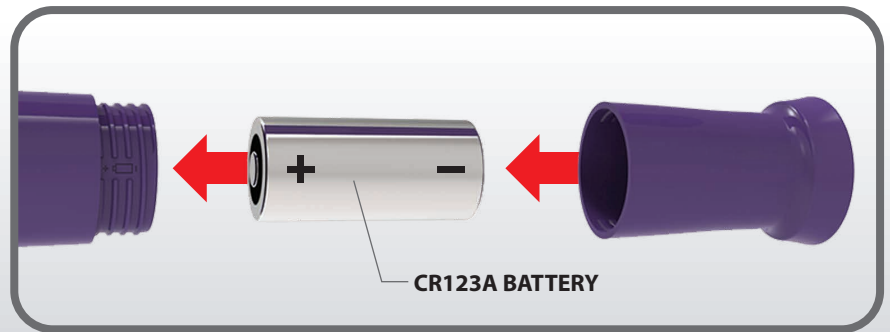


BATTERY COMPARTMENT DOOR



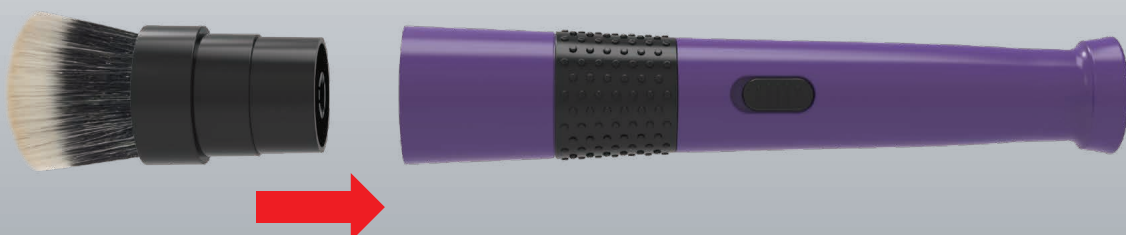
CR123A (non-rechargeable)

Battery Installation



Ensure ON/OFF Switch is slid back to the OFF position. Unscrew the bottom cap counterclockwise. Insert the (CR123A) battery according to the polarity direction shown. Screw the cap on clockwise without overtightening. Replace the battery when the brush rotation slows down or stops working. Only use CR123A batteries.

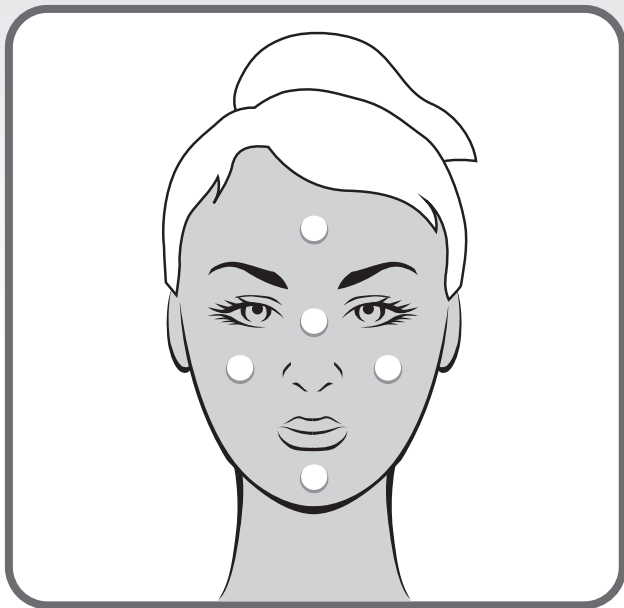
Attaching Brush Heads



Ensure ON/OFF Switch is slid back to the OFF position. Align the brush head into the end of the Power handle, push until you hear it click into position. To replace the brush head, simply pull the brush head off and press on the other brush head until it clicks into position.

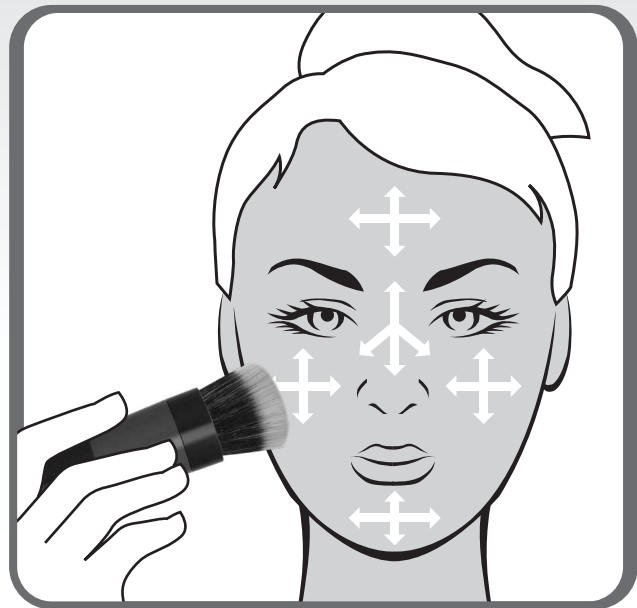
Using Your Airtouch™ Rotating Brush with Liquid Makeup

APPLY



Important, keep hair away from your face using a band or hair tie. Dot your face with liquid or cream makeup. Only a small amount is required. **DO NOT** pour liquid make up onto the brush head.

BLEND



Turn the brush ON. Glide the brush slowly around your face in the direction shown for each area. Use light pressure with side to side or up and down motion. **DO NOT** use a circular motion. Avoid your lips, hairline, and eyes. Continue until blended evenly.

Using Your Airtouch™ Rotating Brush with Powder Makeup

Ensure the unit is powered off. Lightly pat the brush head directly into the powder makeup. Blend makeup using light pressure with side to side or up and down motion. **DO NOT** use a circular motion.

Cleaning Your Airtouch™ Rotating Brush

Airtouch Rotating Power Handle:

- Ensure unit is powered off.
- **Remove Brush Head from Airtouch Rotating Power Handle.**
- Clean the outside of the unit with a soft, dry cloth. Do not use abrasive or liquids to avoid damage the product.

Brush Head:

- Ensure unit is powered off.
- **Remove Brush Head from Airtouch Rotating Power Handle.**
- Clean Brush Head using mild soap and rinse with warm water. Lay them on their side to dry.

Battery Replacement

As lithium batteries lose power, they may fail abruptly. If your brush stops working, make sure the bottom cap is on securely. If that doesn't solve the problem and your brush is running slow or not working, the battery needs to be replaced. Follow the Battery Installation instructions. Dispose of the old battery following regulations in your area. Only replace with a lithium non-rechargeable CR123A 3V battery.

BATTERY WARNINGS:

- Battery must be inserted with the correct polarity.
- The supply terminals are not to be short-circuited.
- Remove battery if the item will not be used for an extended period of time.
- Non-rechargeable batteries are not to be recharged.
- Only CR123A battery or equivalent type as recommended are to be used.
- Exhausted battery should be removed from the item.

For helpful tips and tricks please visit: www.AirTouchTips.com

Airtouch™
ROTATING MAKEUP BRUSH

©2017 APG All Rights Reserved.
Airtouch is a trademark of APG

Distributed by Allstar Products Group
Hawthorne, NY 10532

Product Color and Appearance may vary

Made in China